



GENUINE PRODUCTS

Spec it Right: Kenworth

28SI™

- **Output:** 12 Volts 200 Amps - 140 Amps at idle
- **Dual Internal Fans:** Provides maximum cooling
- **Remote Sense:** Drastically reduce battery charge time
- **Warranty:** 2 years/250,000 miles

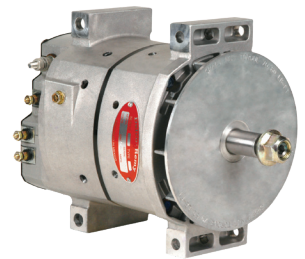


28SI OPTION CODE

1812400

36SI™

- **Output:** 12 Volts 160/165 Amps - 100 Amps at idle
- **Highest output at low RPM:** Manages heavy electrical loads at low RPM preventing premature battery discharge
- **Remote Sense:** Drastically reduce battery charge time
- **Brushless durability:** 13 fewer moving parts than a brush-type alternator, eliminating components that wear out while extending product life
- **Warranty:** 3 years/350,000 miles

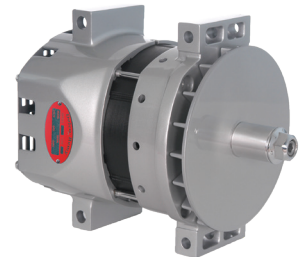


36SI OPTION CODE

1812162*

38SI™ & 40SI™

- **Output:**
38SI: 12 Volts 215 Amps - 121 Amps at idle
40SI: 12 Volts 240 Amps - 160 Amps at idle
40SI: 12 Volts 275 Amps - 180 Amps at idle
40SI: 12 Volts 300 Amps - 190 Amps at idle
40SI: 12 Volts 320 Amps - 190 Amps at idle
- **Highest output at low RPM:** Manages heavy electrical loads at idle preventing premature battery discharge
- **Remote Sense:** Drastically reduce battery charge time
- **Brushless durability:** 13 fewer moving parts than a brush-type alternator, eliminating components that wear out while extending product life
- **Longer system life:** Over spec'ing extends life of alternator
- **Efficiency and power density:** Highest combination in its class, providing substantial fuel savings
- **Warranty:** 3 years/350,000 miles



38SI OPTION CODE

1812206

40SI OPTION CODES

240 Amp: 1812430*

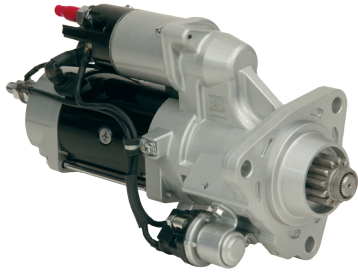
275 Amp: 1812440*

300 Amp: 1812450

320 Amp: 1812451

* Special Quote

Spec it Right: Kenworth



38MT+ OPTION CODE
1832042 (MX 11/13)*

38MT+™

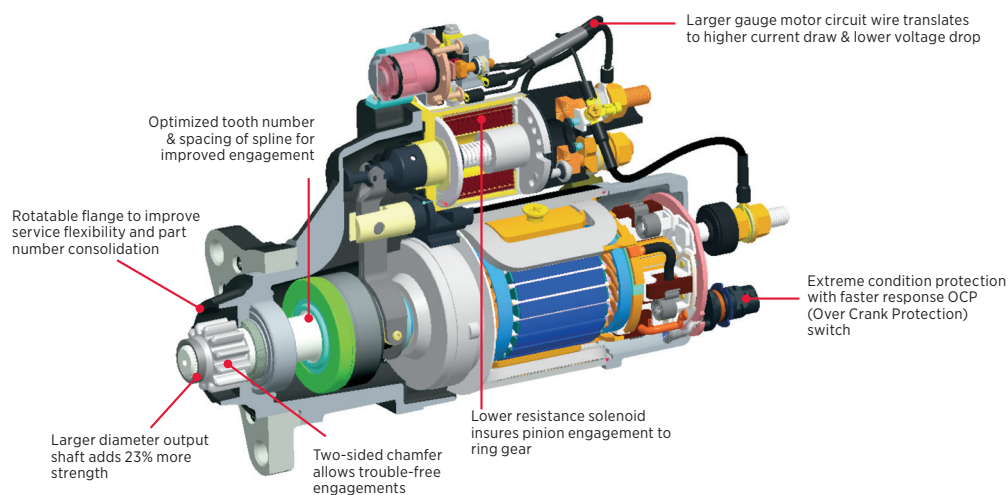
- **Power:** 4.3kW peak at 12V
- **Over Crank Protection:** A built-in circuit breaker, protects the starter from thermal damage, automatically resetting at a safe operating temperature
- **Design refinements** for optimal performance
- **Integral Magnetic Switch (IMS)** reduces voltage drop and ensures the solenoid receives the maximum available voltage in any starting condition.
- **Improved starter pinion engagement:** Redefined electrical soft start reduces wear-and-tear by slowly rotating the pinion until it properly engages into the ring gear before cranking.
- **Warranty:** Integrated OCP model: 3 years/350,000 miles



39MT OPTION CODE
1832039 (Cummins)

39MT™

- **Tested and approved for all MX engines**
- **Over Crank Protection:** A built-in circuit breaker, protects the starter from thermal damage, automatically resetting at a safe operating temperature
- **Design refinements** for optimal performance
- **Improved starter pinion engagement:** Redefined electrical soft start reduces wear-and-tear by slowly rotating the pinion until it properly engages into the ring gear before cranking.
- **Warranty:** 3 years/350,000 miles



* Special Quote

delcoremy.com



BorgWarner Inc.
600 Corporation Drive
Pendleton, IN 46064 USA
For Customer Service or Technical
Assistance call 1-800-372-3555

Delco Remy is a registered trademark of General Motors Corporation
licensed to BorgWarner PDS (Anderson) L.L.C. | F100K | 8-21