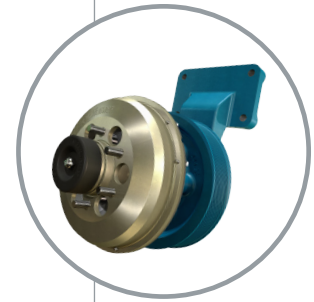


Navistar: Spec it Right

thermal.borgwarner.com

On/Off Fan Drives

- **Proven and robust:** Most durable bearing package and base design for commercial vehicle line haul duty cycle
- **Line haul clutch of choice:** 30% less power consumption than 2-speed
- **Simple:** 20% fewer components than competition
- **Ease of maintenance:** Liner is serviceable on the truck
- **Modular design:** Just the clutch can be replaced for easy, low cost service
- **All makes clutch:** One part number minimizes inventory and costs



**12TKY
OPTION CODE CREDIT**

Cummins ISX15L

Bi-Metal Viscous Fan Drives

- **Simple and effective variable drive:** Bi-metallic sensor modulates fan speed allowing for smooth and efficient operation
- **Stand-alone control:** Simple bimetallic sensor requires no system interface
- **Maintenance free:** Self-contained unit, nothing to service or maintain
- **Smooth, soft engagements:** For extended belt and accessory life
- **Proven, reliable and cost-effective technology**



Engine	OPTION CODES
4400 - N9/ISL/ ISB6.7L	12TSY
BUS - ISB	12TTB

Engine	STANDARD
4300 - N9/ISL	12TSY
Bus - ISB<250 HP	12TSV
Bus - ISB>250 HP	12TSV

Navistar: Spec it Right

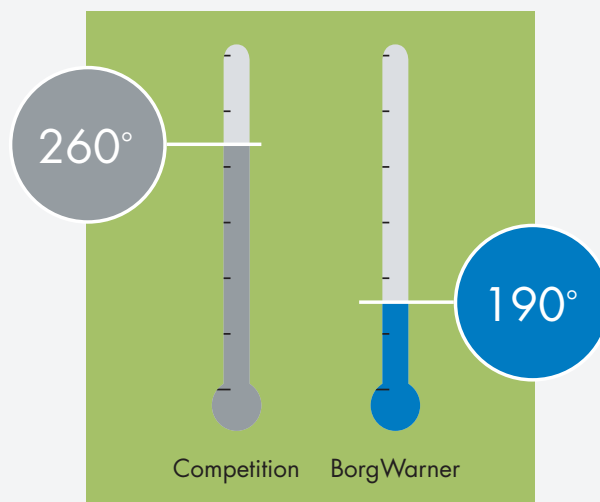
thermal.borgwarner.com



K32™ DuroSpeed Fan Drive

2-Speed fan drive that runs cooler to last longer

- Average 70-degree cooler running temperature means significantly extended bearing and liner life
- Innovative flux ring design dissipates heat 27% better than competing fan clutches
- No spinning air fittings to wear out
- Easy, inexpensive conversion of On/Off clutches using our flux ring assembly kit
- 11 fewer components
- 5 to 10 lbs weight savings versus competitive 2-speed drives



 **BorgWarner**

Made in the USA