

Hybrid

Explore our Technologies

P2 Off-Axis Module

for hybrid vehicles

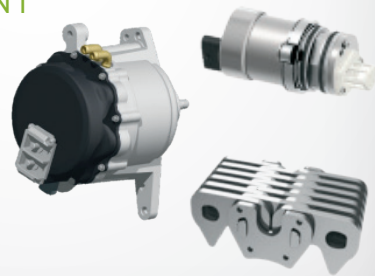
P2 Off-Axis Module

FEATURES AND BENEFITS OF THE P2 OFF-AXIS ARCHITECTURE

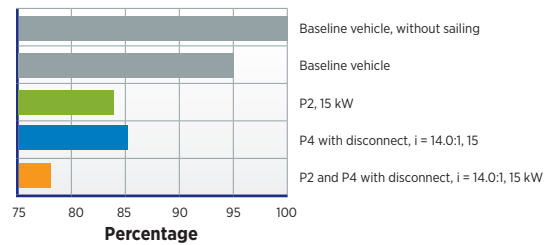
- Compact design; minimal axial length required
- Compatible with A/T, DCT, CVT, and MT
- 48 – 300V
- Extended electric driving with regeneration
- 15 – 30% fuel economy benefit
- Full hybridization with minimal transmission investment
- With A/c integrated into P2 module, FEAD can be deleted

PRODUCT CONTENT

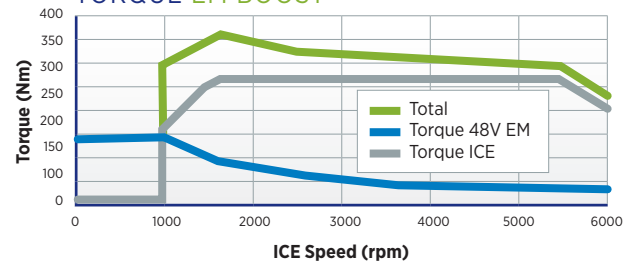
- 48V motor
- HY-VO® chain
- Engine disconnect clutch
- DMF or damper
- High pressure actuation



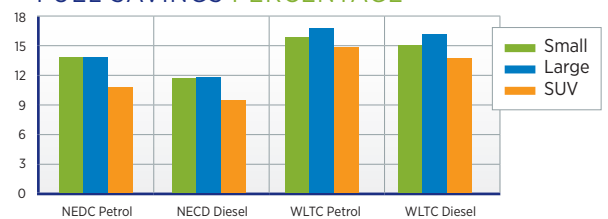
RELATIVE FUEL CONSUMPTION WLTC



TORQUE EM BOOST

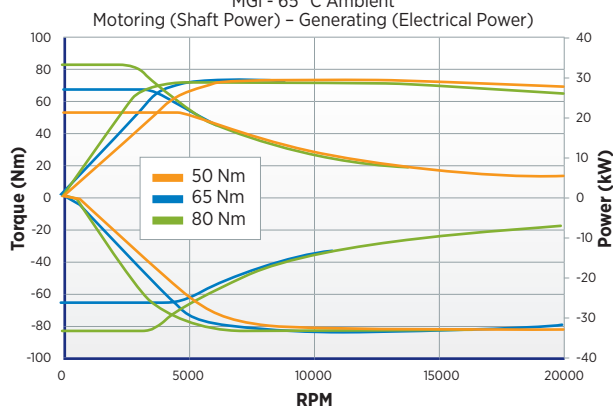


FUEL SAVINGS PERCENTAGE



P2 OFF-AXIS MOTOR PERFORMANCE

50, 65, 80 Nm Motor Peak Performance
MGI - 65° C Ambient



P2 OFF-AXIS 48V eMOTOR*

| Feature | Performance |
|----------------------------|---------------------------|
| Continuous Power (30s) | 15 kW @15,000 RPM (40VDC) |
| Peak Power (1s) (2x/5s) | 20 kW @12,000 RPM (36VDC) |
| Peak Torque | 50 – 80 Nm |
| Peak Torque @ Crank | 150 – 240 Nm |
| Max Regeneration (30s) | >25 kW |
| Voltage | 48V |
| Max Motor Speed Continuous | 18,400 RPM |
| Max Motor Speed | 20,000 RPM |
| Coolant | WEG, 65°C, 6 L/Min |
| Dimensions | Ø 185mm, Length <200mm |

* Scalable Peak Torque between 50 – 80 Nm

For Additional
BorgWarner Information:
borgwarner.com

