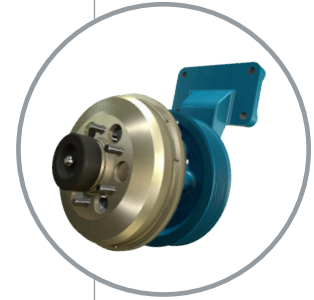


# Peterbilt: Spec it Right

thermal.borgwarner.com

## On/Off Fan Drives

- **Proven and robust:** Most durable bearing package and base design for commercial vehicle line haul duty cycle
- **Line haul clutch of choice:** 30% less power consumption than 2-speed
- **Simple:** 20% fewer components than competition
- **Ease of maintenance:** Liner is serviceable on the truck
- **Modular design:** Just the clutch can be replaced for easy, low cost service
- **All makes clutch:** One part number minimizes inventory and costs



Engine	OPTION CODE
MX-13 Cummins ISX15L Cummins ISX12L/12L G PX-7/ PX-9 Cummins ISLG	262-1030

## Bi-Metal Viscous Fan Drives

- **Simple and effective variable drive:** Bi-metallic sensor modulates fan speed allowing for smooth and efficient operation
- **Stand-alone control:** Simple bimetallic sensor requires no system interface
- **Maintenance free:** Self-contained unit, nothing to service or maintain
- **Smooth, soft engagements:** For extended belt and accessory life
- **Proven, reliable and cost-effective technology**



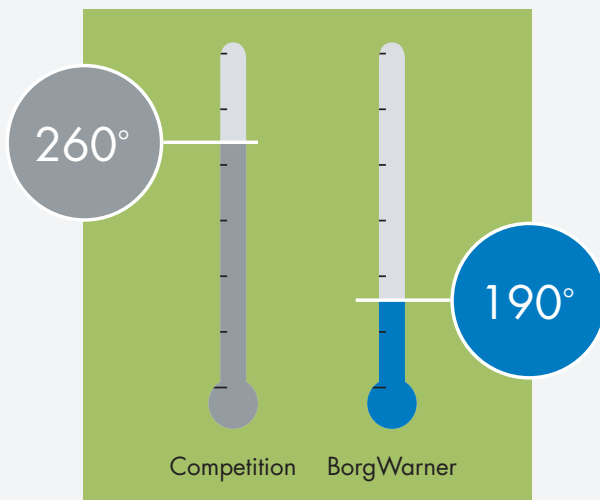
263-6030 OPTION CODE
PX-7 (210/220)

# Peterbilt: Spec it Right

[thermal.borgwarner.com](http://thermal.borgwarner.com)

## **K32™ DuroSpeed Fan Drive** 2-Speed fan drive that runs cooler to last longer

- Average 70-degree cooler running temperature means significantly extended bearing and liner life
- Innovative flux ring design dissipates heat 27% better than competing fan clutches
- No spinning air fittings to wear out
- Easy, inexpensive conversion of On/Off clutches using our flux ring assembly kit
- 11 fewer components
- 5 to 10 lbs weight savings versus competitive 2-speed drives



 **BorgWarner**

**Made in the USA**

© 2016 BorgWarner Thermal - Spec it Right Peterbilt 8/16