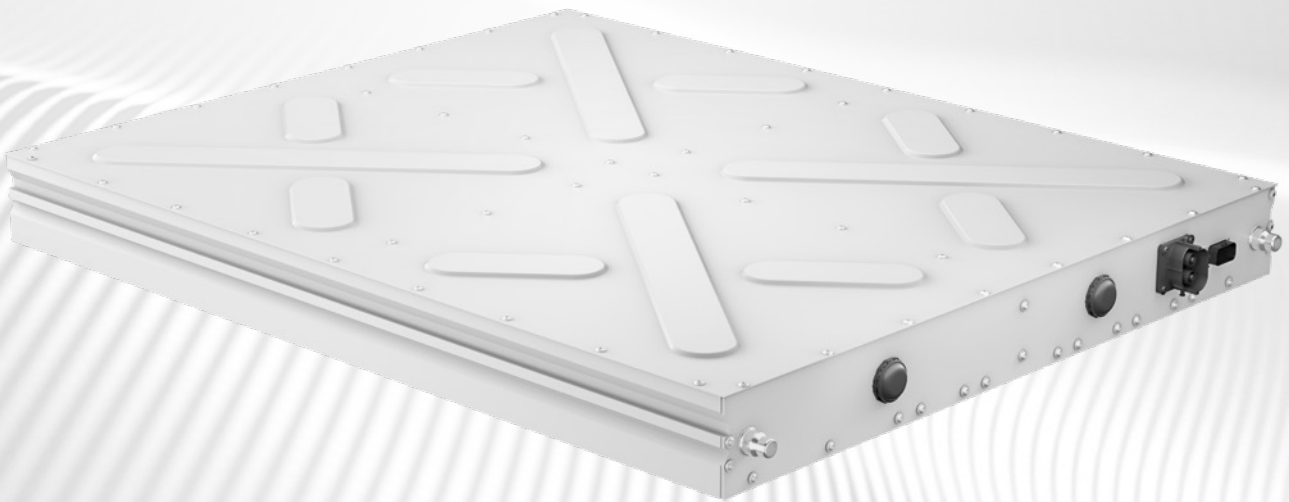


# Explore our Technologies

# Flat Module Architecture

from BorgWarner



# Flat Module Architecture from BorgWarner

## Our future

### Flat Module Architecture

will play a major role in the future light to heavy duty commercial vehicle market. With the Flat Module Architecture, BorgWarner Akasol extends the product portfolio for light duty and heavy duty commercial vehicle.

The modular concept with a voltage range of 350 V – 750 V, usable energy of up to 50 kWh within a flat architecture ensures to serve the wide range requirements of the market with the highest energy density.

## Features

- Modules and electronic components are arranged on one level within the housing, enabling the flat architecture
- Aluminum floor panels allows structural integrity and cooling through extruded profile with integrated cooling channels

## System Benefits

- Opportunity to place the packs in subfloor architectures – omitting roof positioned packs reduces structural requirements on various light to heavy vehicle applications
- Flexible architecture guarantees a perfect match to various space requirements in different applications
- Use of established serial industrialization know-how to produce Flat Module Architecture
- Upcoming technology leadership\* in terms of energy density

*\*Battery systems with flat module architecture*

## Technical Data\*

Voltage Range	350 V – 750 V
Usable Energy	50 kWh
Energy density	approx 200 Wh / kg
Weight	approx 250 kg
Dimensions (l/ w/ h)	1300 mm / 1050 mm / 112 mm

*\*According to current planning*

