



Immediate Release
Media Contact
Katya Pruett
248.754.0550

BORGWARNER ENGINE TIMING CHAINS DRIVE
WIDE VARIETY OF YAMAHA POWERSPORTS APPLICATIONS

BorgWarner's Silent Chain Technology Delivers
Quiet, Dependable Performance

Auburn Hills, Michigan, September 10, 2015 – BorgWarner supplies silent engine timing chains for a wide variety of Yamaha vehicles, including motorcycles, snowmobiles, all-terrain vehicles, recreational off-highway vehicles and personal watercrafts. Designed with state-of-the-art testing and simulation capabilities, BorgWarner's silent engine timing chains deliver low noise and proven durability. BorgWarner produces these chains in Nabari City and Aoyama, offering localized production for Yamaha's manufacturing facilities in Japan.

“Beginning in 1975 when BorgWarner introduced the world's first 6.35 mm silent chain for motorcycles, BorgWarner has built a strong reputation for best-in-class silent engine timing chains, providing premium performance for a variety of powersports applications,” said Joe Fadool, President and General Manager, BorgWarner Morse Systems. “For over 20 years, BorgWarner has supplied our advanced technologies to Yamaha. We are pleased to provide our proven engine timing chain for their latest engines.”

Engines for powersports applications vary widely from 110 cc commuter bikes sold in Asia to a 1000 cc Moto GP racing bikes and snowmobiles sold in Russia. Depending on each application's requirements, BorgWarner offers cost-effective engine timing chains designed for low friction and low mass. BorgWarner's silent timing chain also features an optimized link profile for high efficiency, strength and low noise, vibration and harshness.

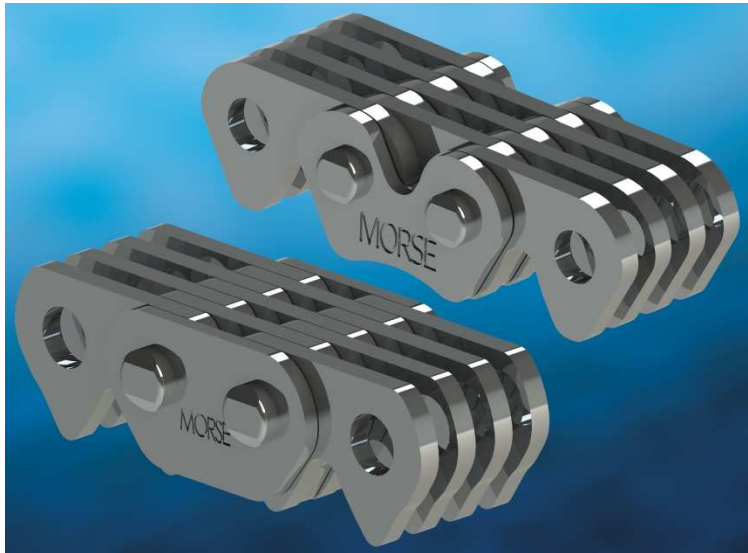
About BorgWarner

BorgWarner Inc. (NYSE: BWA) is a product leader in highly engineered components and systems for powertrains around the world. Operating manufacturing and

-more-

BorgWarner Inc. (BorgWarner Engine Timing Chains Drive Wide Variety of Yamaha Powersports Applications) – 2

technical facilities in 57 locations in 18 countries, the company delivers innovative powertrain solutions to improve fuel economy, reduce emissions and enhance performance. For more information, please visit borgwarner.com.



BorgWarner's silent engine timing chains deliver low noise, proven durability and improved engine efficiency for increased fuel economy.

###